

PROJECT SCOPE :

WORK CONSISTS OF AN INTERIOR REMODEL TO AN EXISTING ONE STORY BUILDING.

FLORIDA BUILDING CODE - BUILDING, 2020 - 7TH EDITION

BUILDING DATA CHART

A. BUILDING CLASSIFICATION (PER FBC CHAPTER 3)		EXISTING MIXED USE (BUSINESS & S-2 STORAGE) ALTERATION LEVEL 2 PER FBC - EXISTING BUILDING
B. TYPE OF CONSTRUCTION (PER FBC TABLES 504.3, 504.4, 506.2 AND FBC SECTION 602)		
MINIMUM CONSTRUCTION TYPE PROVIDED		TYPE IIB (EXISTING)
NON OR FULLY FIRE SPRINKLERED		NON SPRINKLERED (EXISTING)
BUILDING HEIGHT	PERMITTED 55'-0"	PROPOSED 16'-6" (EXISTING)
AREA	23,000 SF	1,920 SF (AREA OF RENOVATION)
NUMBER OF STORIES	2	1 (EXISTING)
MEZZANINE	N/A	N/A

C. FIRE-RESISTANT RATINGS REQUIREMENTS FOR BUILDING ELEMENTS (hours)			
(PER FBC TABLE 601)			
BUILDING ELEMENTS	REQUIREMENT	PROPOSED	DESIGN
STRUCTURAL FRAME INCLUDING COLUMNS, GIRDERS & TRUSSES	0	0	-
BEARING WALLS			
EXTERIOR	0	0	-
INTERIOR	0	0	-
EXTERIOR NON-BEARING WALLS & PARTITIONS	0	0	-
INTERIOR NON-BEARING WALLS & PARTITIONS	0	0	-
FLOOR CONSTRUCTION INCLUDING SUPPORTING BEAMS & JOISTS	0	0	-
ROOF CONSTRUCTION INCLUDING SUPPORTING BEAMS & JOISTS	0	0	-

D. FIRE-RESISTANT RATINGS REQUIREMENTS FOR EXTERIOR WALLS BASED ON FIRE SEPARATION DISTANCE (PER FBC TABLE 602)			
			NOT APPLICABLE FOR BUILDING

E. MAXIMUM AREA OF EXTERIOR WALL OPENINGS (PER FBC TABLE 705.8)			
			NOT APPLICABLE FOR BUILDING

F. FIRE RESISTANT RATED CONSTRUCTION				
	REQUIREMENT	DESIGN	OPENING PROTECTIVE	
FIREWALLS - SECTION 106	N/A	N/A	N/A	N/A
FIRE BARRIERS - SECTION 107	N/A	N/A	N/A	N/A
VERTICAL SHAFTS - SECTION 113	N/A	N/A	N/A	N/A
FIRE PARTITIONS - SECTION 108	N/A	N/A	N/A	N/A
OCCUPANCY SEPARATIONS - TABLE 503.4	0	0		
EXIT ACCESS CORRIDORS - TABLE 1020.1	N/A	N/A	N/A	N/A
SMOKE BARRIERS - SECTION 109	N/A	N/A	N/A	N/A
FLOOR AND ROOF ASSEMBLIES - SECTION 111	N/A	N/A	N/A	N/A

G. PLUMBING CALCULATION					
	OCCUPANTS	INC REQ'D	LAV REQ'D	INC PROJ.	LAV PROJ.
MEN	14	1	1	5	3
WOMEN	14	1	1	1	1
	DRINKING FTN. REQ'D	DRINKING FTN. PROJ.	SERVICE SINK REQ'D	SERVICE SINK PROJ.	
	1	1	1	1	
	(1 H/L/O SYSTEM)				

H. AREA MODIFICATION - NOT APPLICABLE FOR BUILDING			

LEE COUNTY MOSQUITO CONTROL DISTRICT BUILDING E RENOVATION

15159 HOMESTEAD ROAD
LEHIGH ACRES, FL 33971

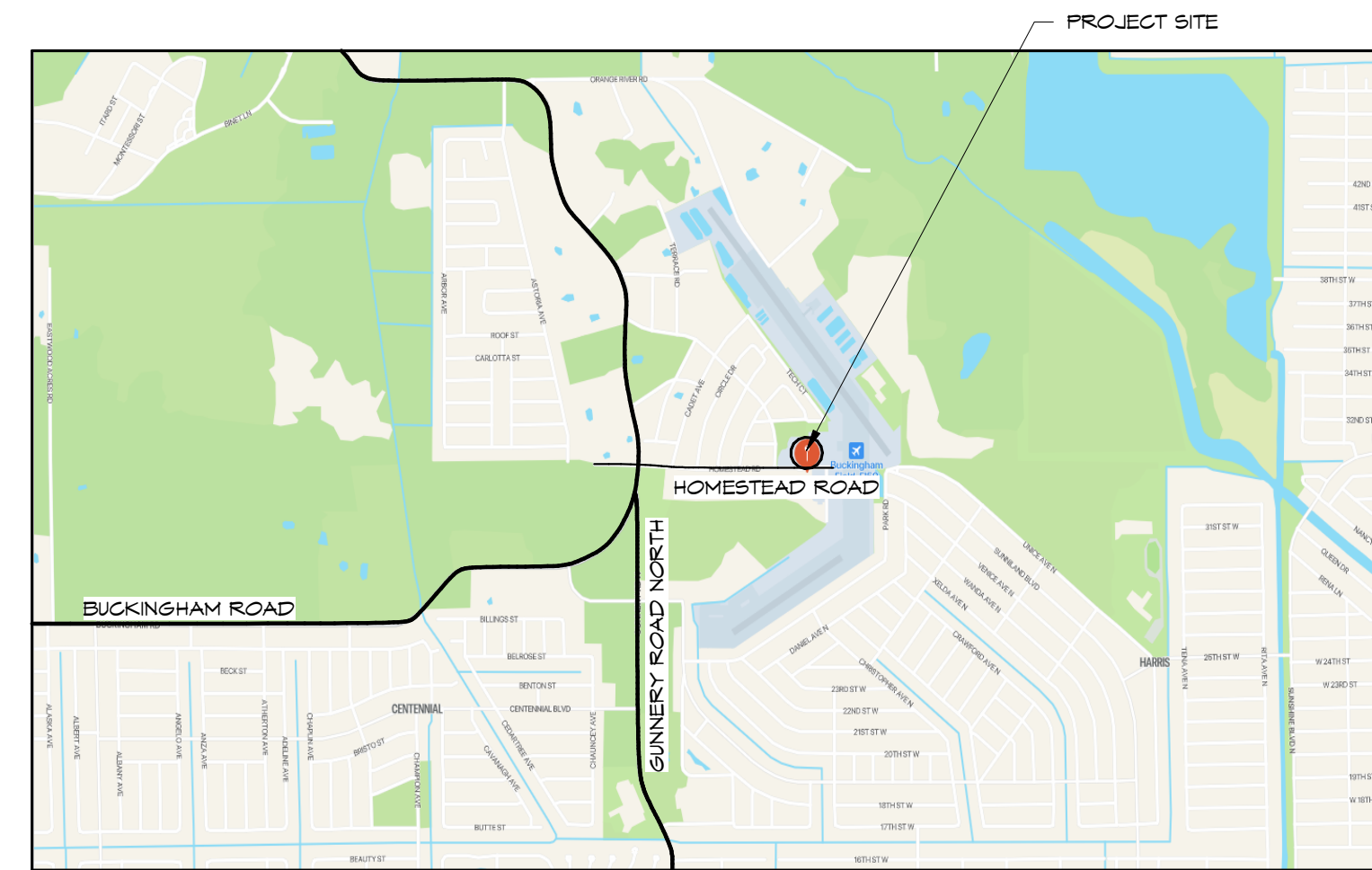
DRAWING INDEX - GENERAL			
		04-21-2023 SD	
		12-15-2023 CD	
		03-18-2024 REVISION 1	
		04-12-2024 REVISION 2	
---	TITLE SHEET	●	●
G001	GENERAL NOTES & ABBREVIATIONS	●	●
G101	WALL TYPES	●	●

DRAWING INDEX - MECHANICAL			
		04-21-2023 SD	
		12-15-2023 CD	
		03-18-2024 REVISION 1	
		04-12-2024 REVISION 2	
M100	MECHANICAL NOTES, SCHEDULE & PLAN	●	●

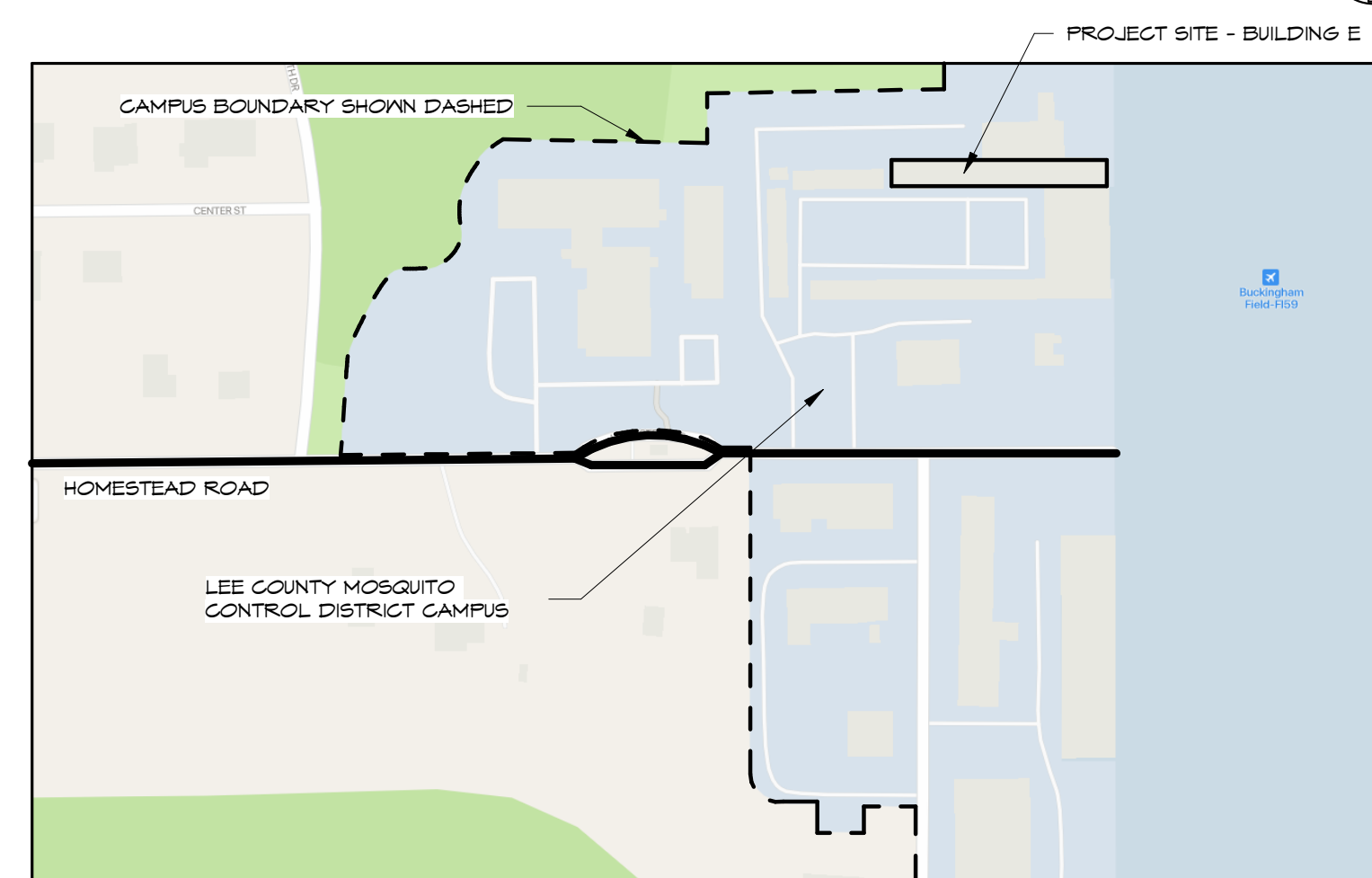
DRAWING INDEX - ARCHITECTURAL			
		04-21-2023 SD	
		12-15-2023 CD	
		03-18-2024 REVISION 1	
		04-12-2024 REVISION 2	
SP101	SITE PLAN	●	●
D101	DEMOLITION PLAN	●	●
A001	LIFE SAFETY PLAN	●	●
A101	FLOOR PLAN & INT ELEVATIONS	●	●
A102	RCP & SCHEDULES	●	●
A501	DETAILS	●	●
A502	DETAILS	●	●
A901	SPECIFICATIONS	●	●
A902	SPECIFICATIONS	●	●
A903	SPECIFICATIONS	●	●

DRAWING INDEX - ELECTRICAL			
		04-21-2023 SD	
		12-15-2023 CD	
		03-18-2024 REVISION 1	
		04-12-2024 REVISION 2	
E001	ELECTRICAL NOTES & SCHEDULES	●	●
E100	EXIST/DEMO ELECTRICAL PLAN	●	●
E101	POWER & SYSTEMS PLAN	●	●
E201	PANEL SCHEDULES	●	●
E301	POWER RISER DIAGRAM	●	●

DRAWING INDEX - PLUMBING			
		04-21-2023 SD	
		12-15-2023 CD	
		03-18-2024 REVISION 1	
		04-12-2024 REVISION 2	
P001	PLUMBING NOTES & SCHEDULES	●	●
P100	PLUMBING PLAN	●	●
P200	PLUMBING ISOMETRICS	●	●



VICINITY MAP



LOCATION MAP



ARCHITECTURE ■ PLANNING ■ INTERIOR DESIGN

PORT CHARLOTTE, FLORIDA 33952
Phone: (941) 639-2450
Fax: (941) 639-2438
AA-26002422

FORT MYERS, FLORIDA 33966
Phone: (239) 277-0554
Fax: (239) 277-0741
www.alliancedesigngroup.com



OWNER:
LEE COUNTY MOSQUITO CONTROL DISTRICT
15159 HOMESTEAD ROAD
LEHIGH ACRES, FLORIDA 33971
(239) 694-2174

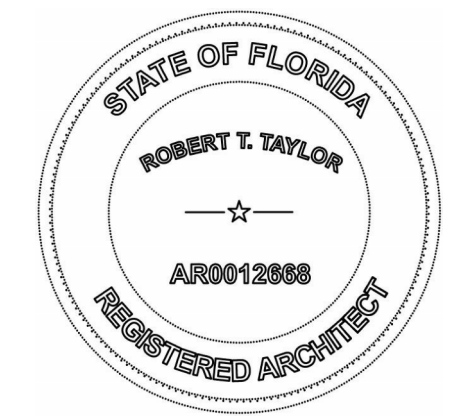
MECHANICAL ENGINEER:
BURGESS BRANT CONSULTING ENGINEERS
12995 SOUTH CLEVELAND AVE #229
FORT MYERS, FLORIDA 33907
(239) 274-0020

ELECTRICAL ENGINEER:
BURGESS BRANT CONSULTING ENGINEERS
12995 SOUTH CLEVELAND AVE #229
FORT MYERS, FLORIDA 33907
(239) 274-0020

PLUMBING ENGINEER:
BURGESS BRANT CONSULTING ENGINEERS
12995 SOUTH CLEVELAND AVE #229
FORT MYERS, FLORIDA 33907
(239) 274-0020

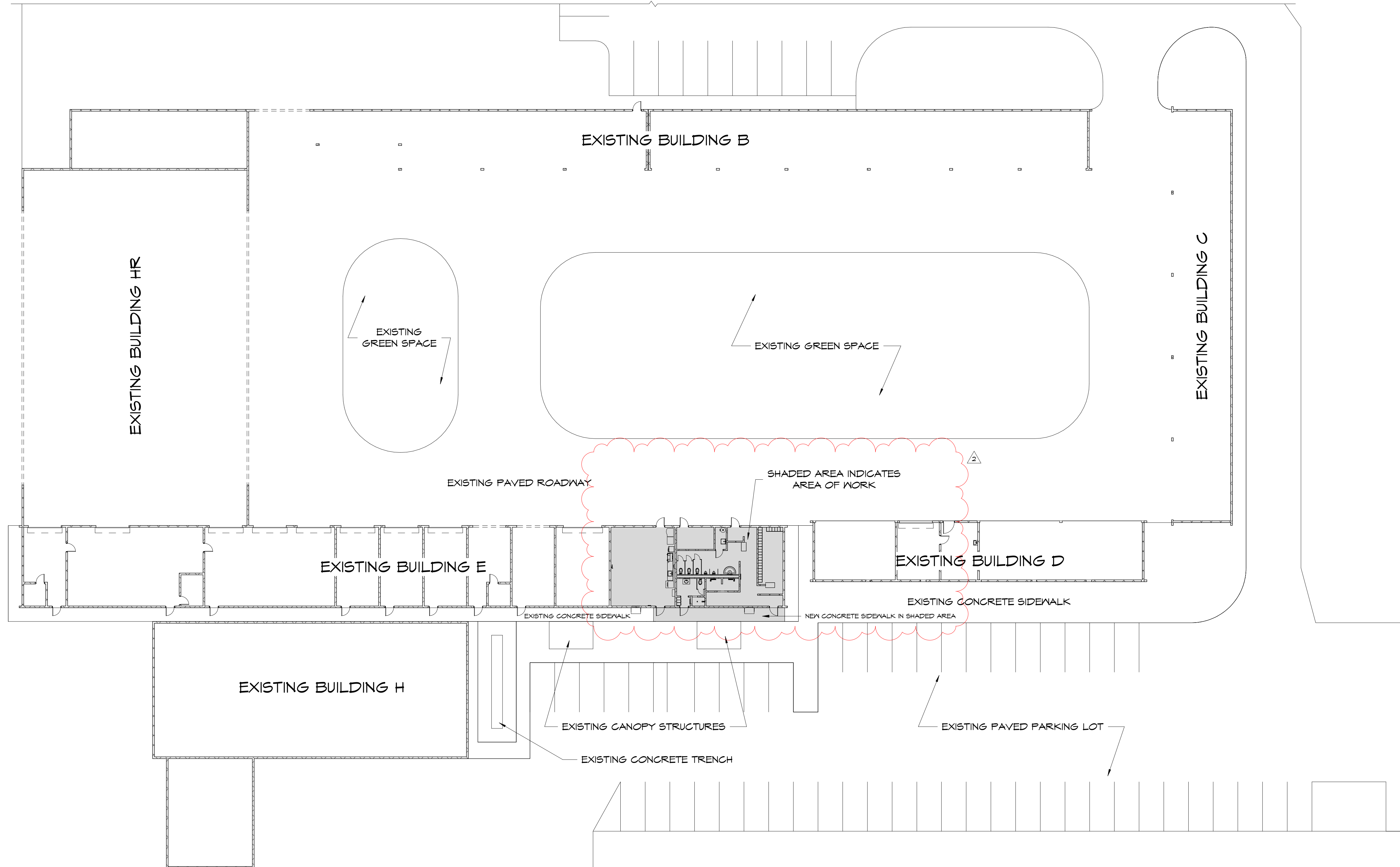
DRAWING / PHASE / REVISION

#	DESCRIPTION	DATE
	ISSUED FOR SD	04-21-2023
	ISSUED FOR 100% CD	12-15-2023
1	REVISION 1	03-18-2024
2	REVISION 2	04-12-2024



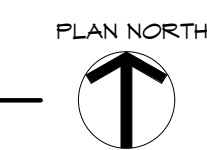
ROBERT T. TAYLOR
AR0012668

2023-J-135



SITE PLAN - EXISTING

SCALE : 1" = 20'-0"



ADG
 ARCHITECTURE, LLC
 ARCHITECTURE • PLANNING • INTERIOR DESIGN

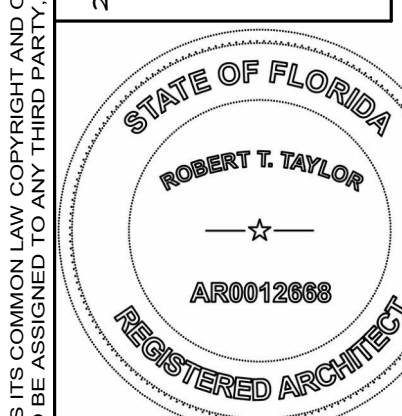
4161 Tamiami Trail #501
 Fort Charlotte, Florida 33952
 Ph (941) 838-2450 Fax (941) 839-2458

3820 Colonial Blvd. #100
 Fort Myers, Florida 33906
 Ph (239) 277-5554 Fax (239) 277-0741

AA-26002422

www.adgarchitecture.com

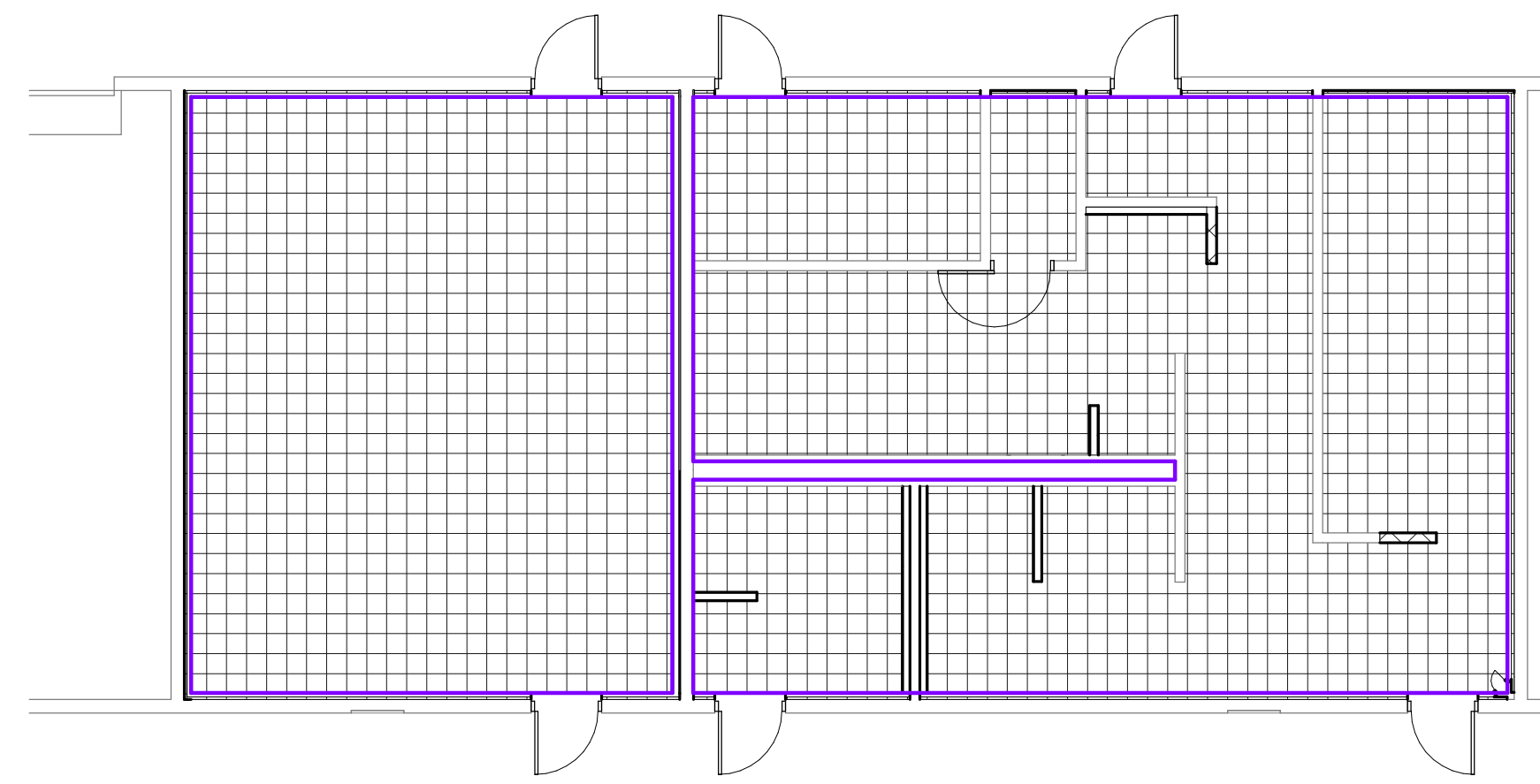
ISSUED FOR 100% CD	12-15-2023
2 REVISION 2	04-12-2024



ROBERT T. TAYLOR
 AR0012668

12-15-2023

SP101
 PROJECT NO. 2023-J-195

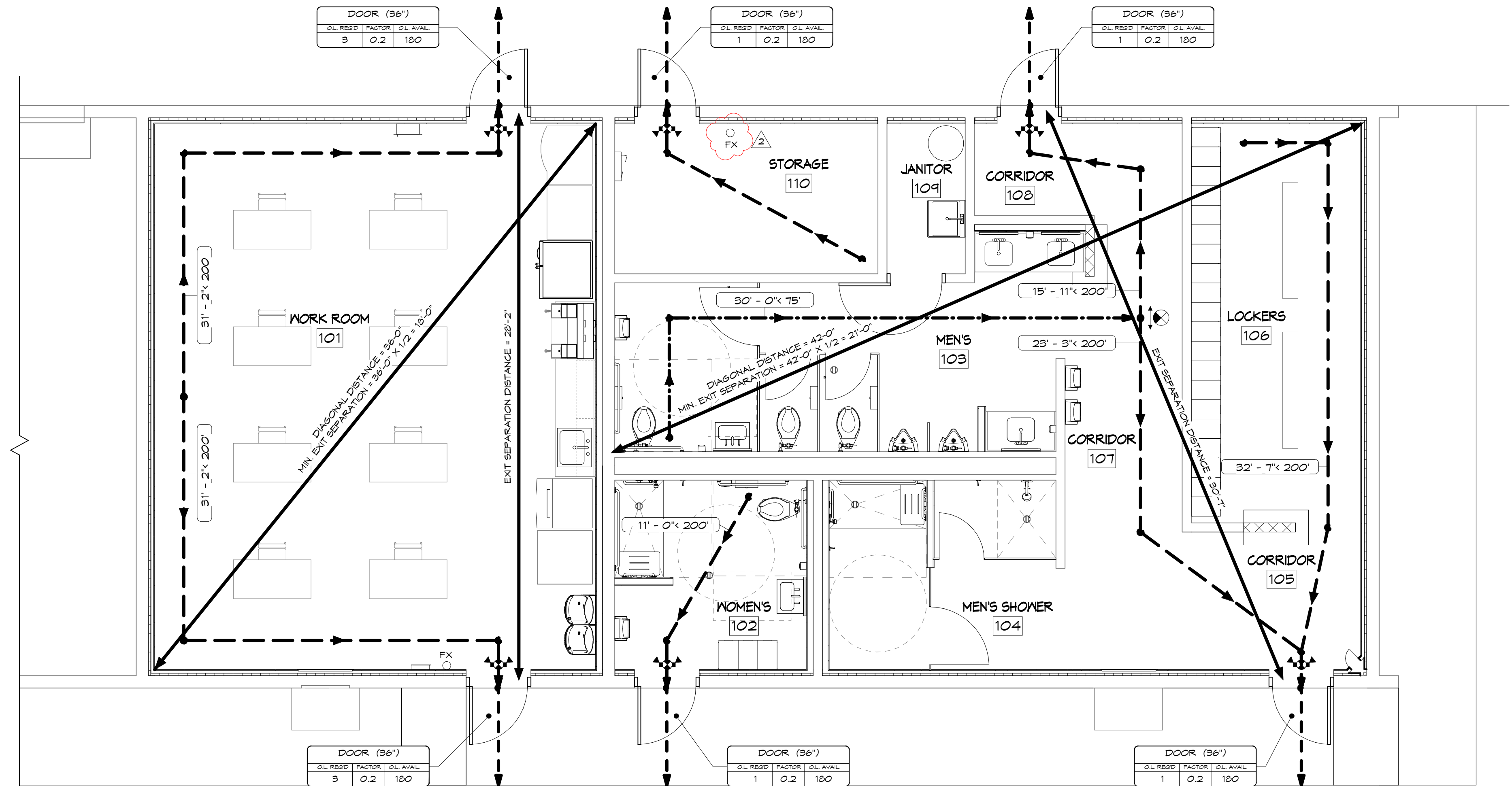
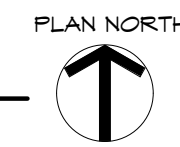


FILL LEGEND
 SPRAY INSULATION

NOTE:
 INSULATION SPRAY TO COVER UNDERSIDE OF EXISTING ROOF STRUCTURE IN AREA OF WORK ONLY. INSULATION SPRAY TO MEET MINIMUM R-19. SPRAY INSULATION TO MEET REQUIREMENTS OF FBC SECTION 2603.4 AND MEETS ACCEPTABLE CRITERIA OF NFPA 275. AN INTUMESCENT COATINGS IN COMPLIANCE WITH THE ABOVE CRITERIA APPLIED TO THE SPRAY INSULATION MAY ALSO BE USED.

SPRAY INSULATION PLAN

SCALE: 1/8" = 1'-0"



LIFE SAFETY PLAN

SCALE: 1/4" = 1'-0"



LIFE SAFETY LEGEND :

- EXIT
- COMMON PATH OF EGRESS TRAVEL
- EXIT ACCESS
- EXIT DISCHARGE
- 2-HOUR FIRE WALL
- 2-HOUR FIRE-RATED WALL
- ILLUMINATED EXIT SIGN, SINGLE FACE
- ILLUMINATED EXIT SIGN, DOUBLE FACE
- WALL MOUNTED EMERGENCY LIGHT
- COMBINED BATTERY-POWERED EMERGENCY LIGHT & ILLUMINATED EXIT SIGN
- 1-1/2 HOUR FIRE-RATED FIRE DOOR
- LUMINAIRE PROVIDING EMERGENCY ILLUMINATION
- FIRE EXTINGUISHER
- FIRE EXTINGUISHER CABINET
- EGRESS COMPONENT CAPACITY
- GOVERNING COMPONENT CAPACITY
- DISTANCE TO EGRESS COMPONENT
- EGRESS COMPONENT IDENTIFIER

Name
 101
 XXX ← GOVERNING COMPONENT CAPACITY
 AREA ← AREA - OCCUPANT CAPACITY
 ### ← OCCUPANT LOAD FACTOR

OCCUPANT LOAD OF WORK AREA CALCULATION

OCCUPANCY CALCULATION	LOAD FACTOR	SQUARE FEET	NUMBER OF OCCUPANTS
BUSINESS	150	614	5
TOTAL OCCUPANT LOAD		614	5

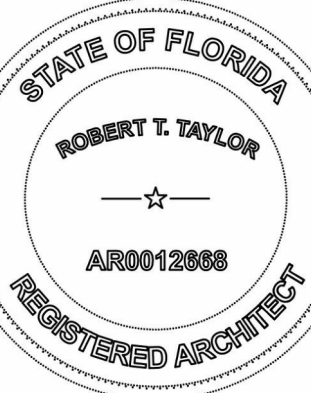
LEE COUNTY MOSQUITO CONTROL DISTRICT
BUILDING E RENOVATION
 15154 HOMESTEAD ROAD
 LEHIGH ACRES, FL 33471



4161 Tamiami Trail #501
 Fort Charlotte, Florida 33522
 Ph: (941) 858-2450 Fax: (941) 858-2458
 3820 Colonial Blvd., #100
 Fort Myers, Florida 33906
 Ph: (239) 277-5554 Fax: (239) 277-0741
 AA-26002422

 www.adgarchitecture.com

12-15-2023 04-12-2024
 ISSUED FOR 100% CD
 2 REVISION 2

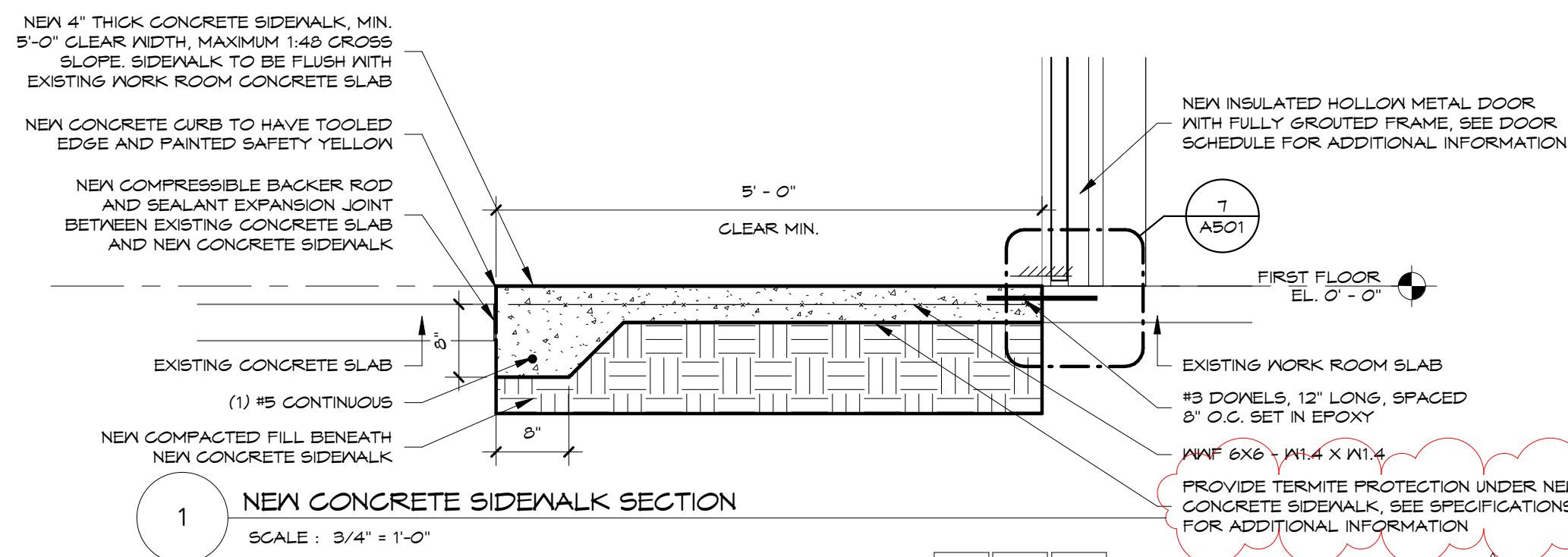


ROBERT T. TAYLOR
 AR0012668

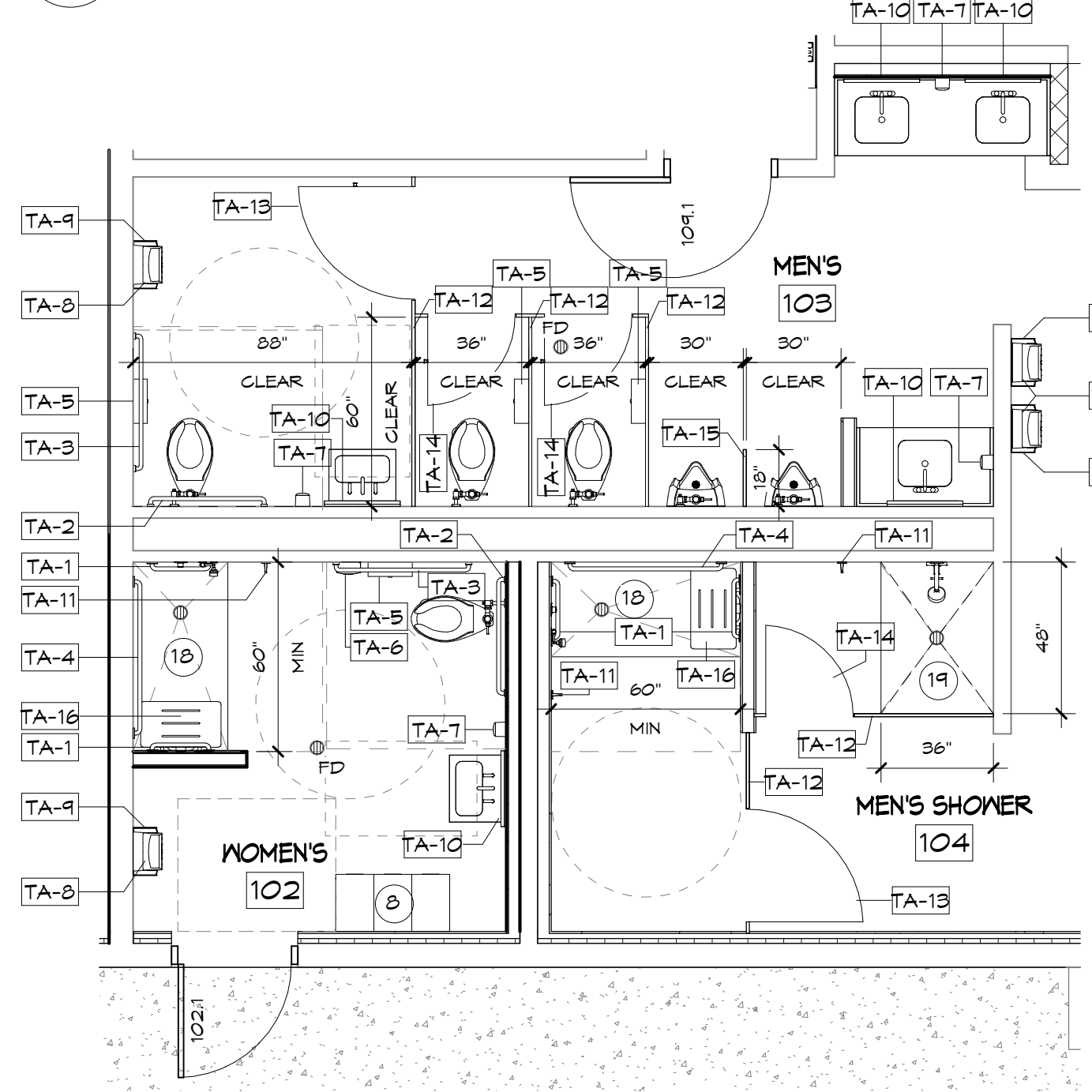
12-15-2023

A001

PROJECT NO. 2023-J-195



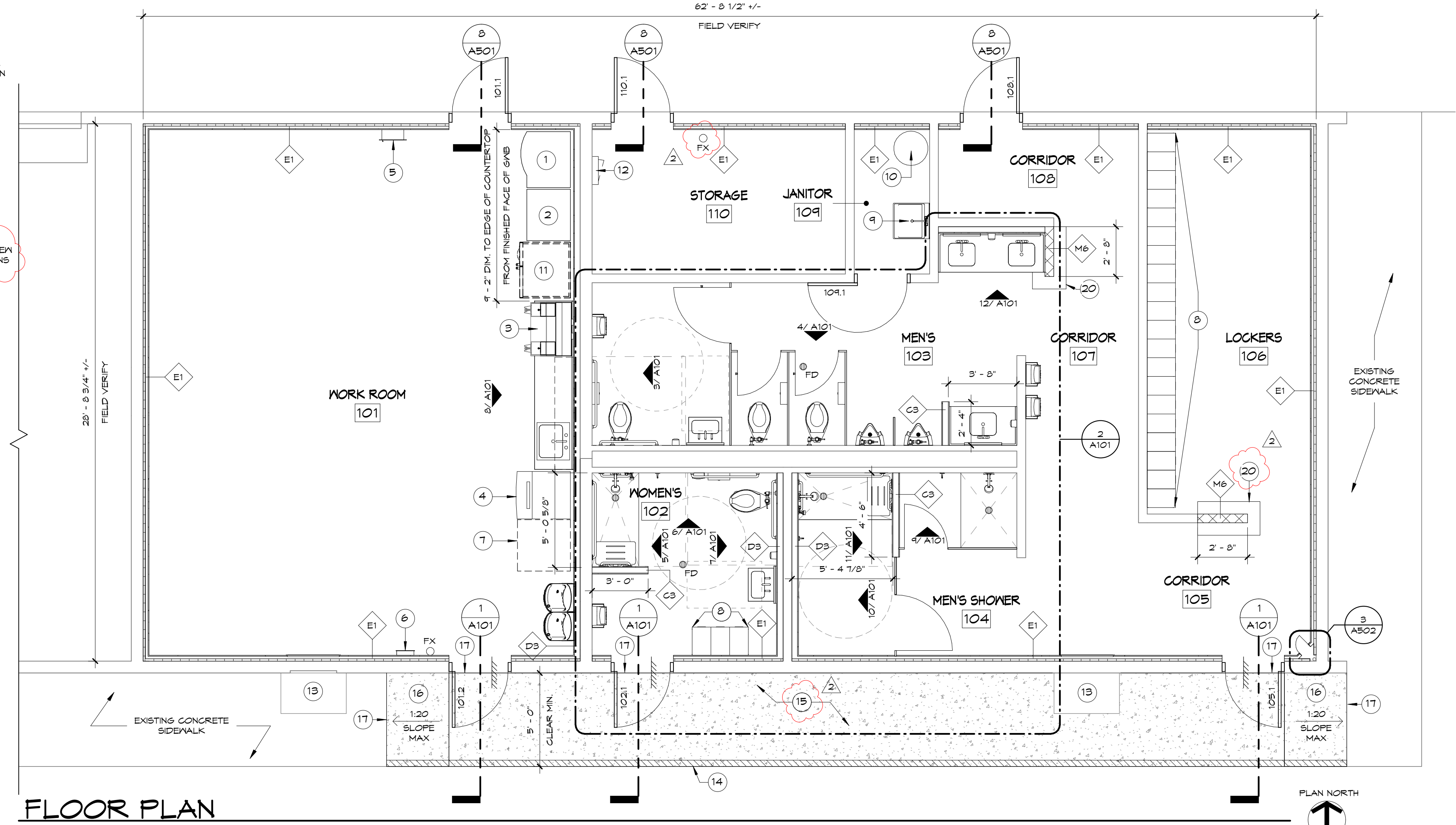
1 NEW CONCRETE SIDEWALK SECTION
SCALE: 3/4" = 1'-0"



2 TOILET ACCESSORY PLAN - WOMEN'S 102 & MEN'S 103
SCALE: 1/4" = 1'-0"

TYPE	MANUFACTURER	MODEL	DESCRIPTION
TA-1	BOBRICK	B-600x24	24" X 1 1/2" DIA GRAB BAR
TA-2	BOBRICK	B-600x36	36" X 1 1/2" DIA GRAB BAR
TA-3	BOBRICK	B-600x42	42" X 1 1/2" DIA GRAB BAR
TA-4	BOBRICK	B-600x48	48" X 1 1/2" DIA GRAB BAR
TA-5	KIMBERLY CLARK	04951	SURFACE MOUNTED DOUBLE JUMBO ROLL TOILET TISSUE DISPENSER
TA-6	BOBRICK	B-210	SURFACE MOUNTED SANITARY NAPKIN DISPOSAL
TA-7	SCOTT	92149	SURFACE MOUNTED SOAP DISPENSER, MANUAL OPERATION
TA-8	KIMBERLY CLARK	04960	SURFACE MOUNTED PAPER TOWEL DISPENSER
TA-9	BOBRICK	B-271	SURFACE MOUNTED WASTE RECEPTACLE
TA-10	BOBRICK	B-169	24" X 36" STAINLESS STEEL FRAMED MIRROR
TA-11	BOBRICK	B-2116	SURFACE MOUNTED TOWEL HOOK
TA-12	SCRANTON PRODUCTS	AS SPECIFIED	FLOOR MOUNTED, OVERHEAD BRACED SOLID PLASTIC TOILET PARTITION
TA-13	SCRANTON PRODUCTS	AS SPECIFIED	SOLID PLASTIC TOILET PARTITION DOOR, 36" WIDE
TA-14	SCRANTON PRODUCTS	AS SPECIFIED	SOLID PLASTIC TOILET PARTITION DOOR, 28" WIDE
TA-15	SCRANTON PRODUCTS	AS SPECIFIED	WALL MOUNTED, SOLID PLASTIC URINAL PARTITION
TA-16	BOBRICK	B-5193	SOLID PHENOLIC FOLDING SHOWER SEAT WITH STAINLESS STEEL FRAME

TOILET ACCESSORY SCHEDULE



FLOOR PLAN
SCALE: 1/4" = 1'-0"

FLOOR PLAN GENERAL NOTES

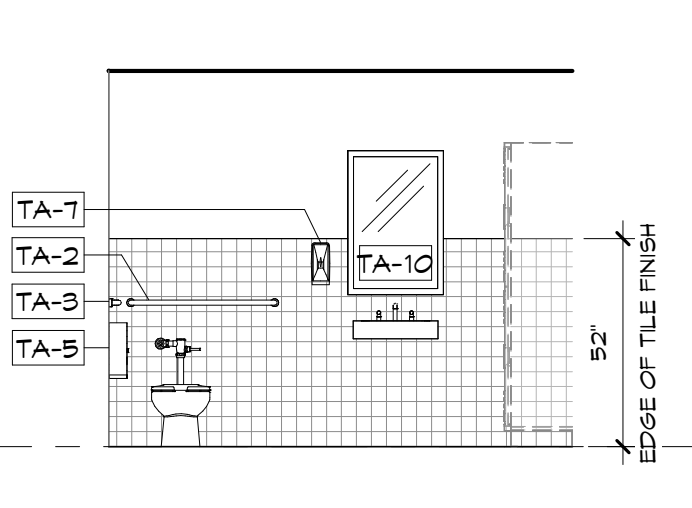
1. CONCRETE AND CONCRETE MASONRY UNIT WALLS ARE DIMENSIONED TO THE FACE OF CONCRETE, U.N.O.
2. FRAMED WALLS ARE DIMENSIONED TO THE FACE OF STUD, U.N.O.
3. DIMENSIONS NOTED AS 'FINISH DIMENSION' ARE TO BE CLEAR DIMENSIONS TO THE TO FACE OF ADJACENT FINISHES.
4. VERIFY ALL EXISTING DIMENSIONS IN FIELD

FLOOR PLAN LEGEND

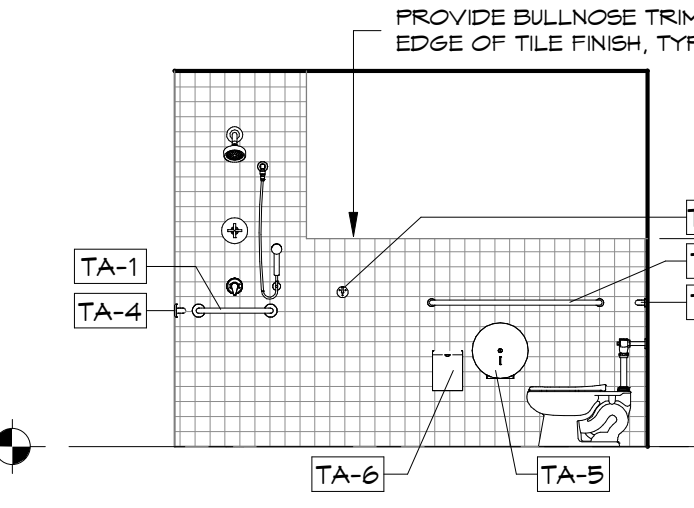
- XXXX DOOR TAG - REFER TO DOOR SCHEDULE
- ◇ WALL TYPE TAG
- ⊕ FLOOR PLAN KEY NOTE
- //// FLUSH

FLOOR PLAN KEY NOTES

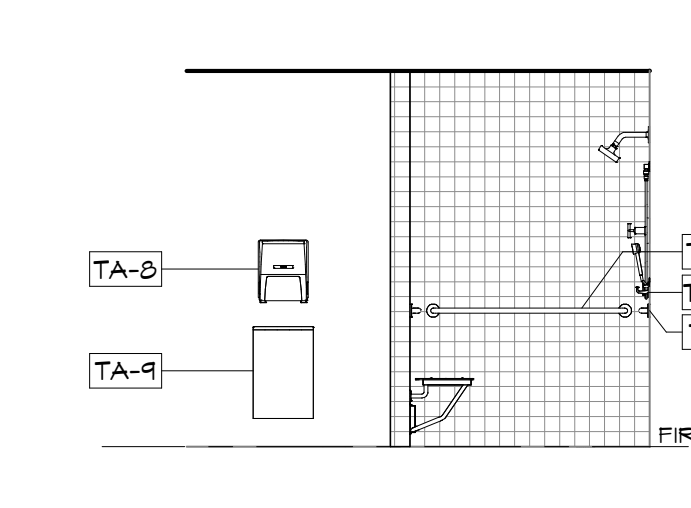
1. EXISTING SODA VENDING MACHINE TO BE REINSTALLED AND RECONNECTED. SEE ELECTRICAL.
2. EXISTING SNACK VENDING MACHINE TO BE REINSTALLED AND RECONNECTED. SEE ELECTRICAL.
3. EXISTING COFFEE MACHINE TO BE REINSTALLED AND RECONNECTED. SEE ELECTRICAL.
4. EXISTING ICE MACHINE TO BE REINSTALLED AND RECONNECTED. SEE ELECTRICAL.
5. EXISTING AED TO BE REINSTALLED AT INDICATED LOCATION. MOUNT AED AT 42" A.F.F.
6. EXISTING EMPLOYEE TIME CLOCK TO BE REINSTALLED.
7. NEW 5 GALLON BOTTLE WATER REFILLING STATION, OWNER FURNISHED, OWNER INSTALLED.
8. NEW CURB-MOUNTED, DOUBLE TIER STEEL LOCKERS. LOCKERS TO BE OWNER FURNISHED, OWNER INSTALLED.
9. NEW UTILITY SINK PLUMBING FIXTURE, SEE PLUMBING
10. NEW WATER HEATER, SEE PLUMBING
11. NEW 36" WIDE REFRIGERATOR / FREEZER, OWNER FURNISHED, OWNER INSTALLED.
12. NEW ELECTRICAL PANEL, SEE ELECTRICAL.
13. EXISTING MECHANICAL UNIT TO BE REMOVED AS A BID ALTERNATE. SEE MECHANICAL FOR ADDITIONAL INFORMATION.
14. HATCHED REGION INDICATES LOCATION OF NEW SIDEWALK CURB. NEW CURB TO HAVE TOOLED EDGE AND BE PAINTED SAFETY YELLOW.
15. NEW 4" THICK CONCRETE SIDEWALK WITH #3 6x6 - #11.4 X #11.4 REINFORCING. NEW SIDEWALK TO HAVE MIN. 5'-0" CLEAR WIDTH, MAXIMUM 1:48 GROSS SLOPE. PROVIDE CONTRACTION JOINTS 8'-0" O.C., CUT CONTRACTION JOINTS NO LATER THAN 12 HOURS AFTER CONCRETE POUR. SIDEWALK TO BE FLUSH WITH EXISTING WORK ROOM CONCRETE SLAB. PROVIDE TERMITE PROTECTION UNDER NEW CONCRETE SLAB. SEE SPECIFICATIONS FOR ADDITIONAL INFORMATION.
16. NEW SLOPED CONCRETE POUR TO MEET EXISTING SIDEWALK. SLOPE NOT TO EXCEED 1:20.
17. DOYEL TO EXISTING SLAB/SIDEWALK WITH 12" LONG, #3 DOYELS SPACED 8" O.C., TYP.
18. NEW ACCESSIBLE ROLL-IN SHOWER, SEE PLUMBING. SEE SHEET A502 FOR TYPICAL SHOWER SLAB CUT SECTIONS.
19. NEW SHOWER, SEE PLUMBING. SEE SHEET A502 FOR TYPICAL SHOWER SLAB CUT SECTIONS.
20. NEW 8" THICKENED CONCRETE SLAB POUR UNDER NEW MASONRY WALL CONSTRUCTION. CUT EXISTING SLAB MIN. 8" AROUND NEW MASONRY WALL LOCATION. DOYEL INTO EXISTING SLAB WITH 12" LONG, #3 DOYELS SPACED 8" O.C. PROVIDE TERMITE PROTECTION UNDER NEW CONCRETE SLAB. SEE SPECIFICATIONS FOR ADDITIONAL INFORMATION.



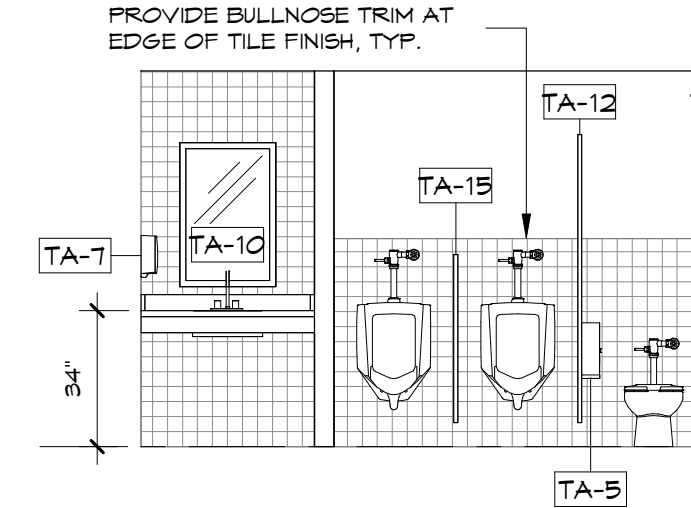
7 INT. EL. - WOMEN'S 102 - 1
SCALE: 1/4" = 1'-0"



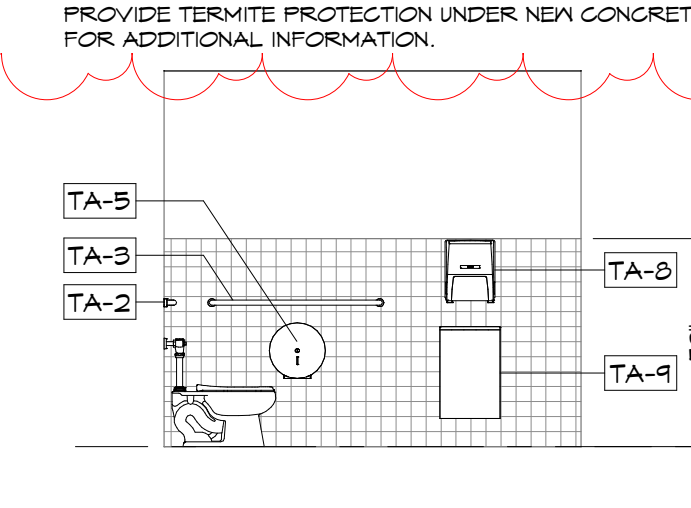
6 INT. EL. - WOMEN'S 102 - 2
SCALE: 1/4" = 1'-0"



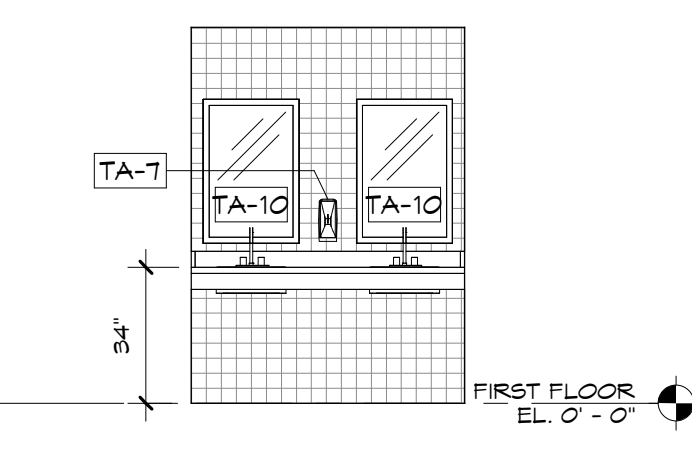
5 INT. EL. - WOMEN'S 102 - 3
SCALE: 1/4" = 1'-0"



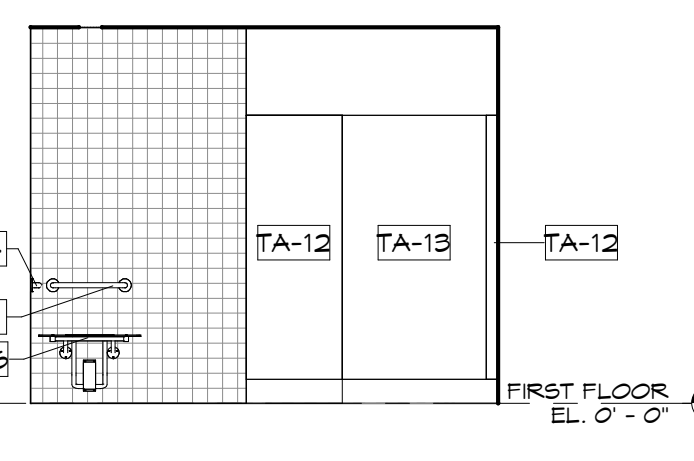
4 INT. EL. - MEN'S 103 - 1
SCALE: 1/4" = 1'-0"



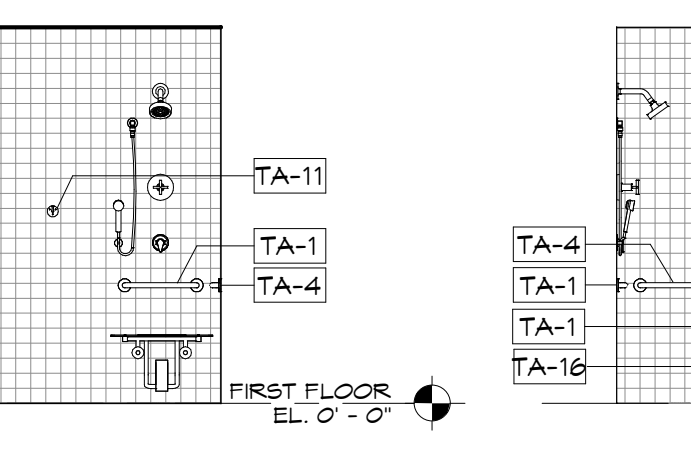
3 INT. EL. - MEN'S 103 - 2
SCALE: 1/4" = 1'-0"



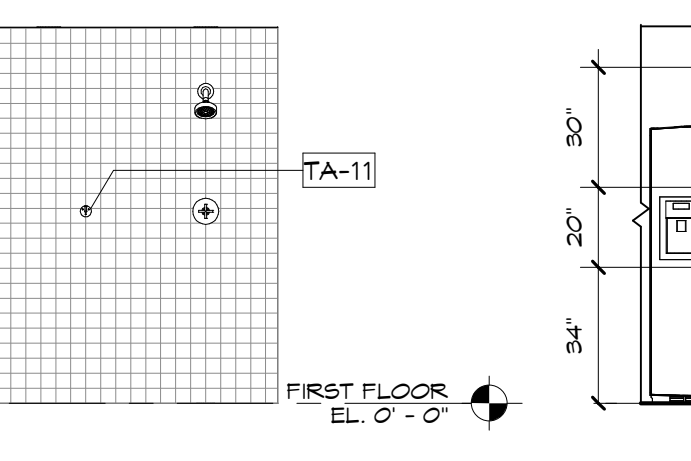
12 INT. EL. - MEN'S 103 - 3
SCALE: 1/4" = 1'-0"



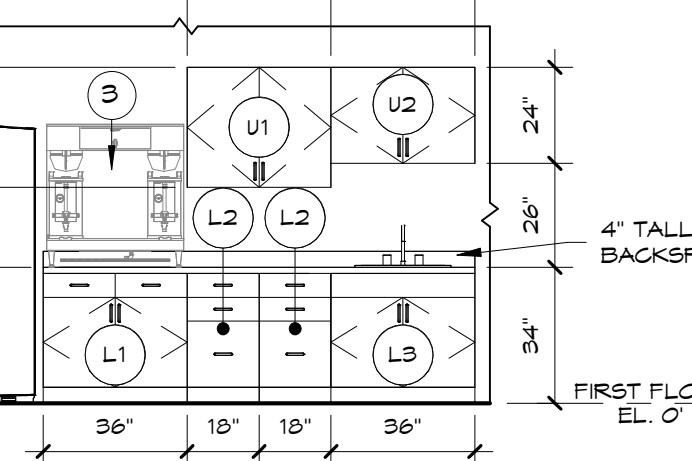
11 INT. EL. - MEN'S SHWR 104 - 3
SCALE: 1/4" = 1'-0"



10 INT. EL. - MEN'S SHWR 104 - 2
SCALE: 1/4" = 1'-0"



9 INT. EL. - MEN'S SHWR 104 - 1
SCALE: 1/4" = 1'-0"



8 INT. EL. - BREAK ROOM 101
SCALE: 1/4" = 1'-0"

TAG	HEIGHT	WIDTH	DEPTH	DETAIL REFERENCE
U1	2'-6"	9'-0"	1'-0"	4/A501
U2	2'-0"	9'-0"	1'-0"	4/A501

TAG	HEIGHT	WIDTH	DEPTH	DETAIL REFERENCE
L1	2'-0 1/2"	9'-0"	2'-0"	1/A501
L2	2'-0 1/2"	1'-6"	2'-0"	2/A501
L3	2'-0 1/2"	9'-0"	2'-0"	3/A501

UPPER CASEWORK SCHEDULE

LOWER CASEWORK SCHEDULE

LEE COUNTY MOSQUITO CONTROL DISTRICT
BUILDING RENOVATION
15154 HOMESTEAD ROAD
LEHIGH ACRES, FL 33471

ADG ARCHITECTURE, LLC
ARCHITECTURE • PLANNING • INTERIOR DESIGN

4161 Tamiami Trail #501
Fort Charlotte, Florida 33852
Ph: (813) 858-2450 Fax: (813) 858-2458

3826 Colonial Blvd. #100
Fort Myers, Florida 33966
Ph: (239) 277-5554 Fax: (239) 277-0741

AA-26002422

www.adgarchitecture.com

04-21-2023
12-15-2023
ISSUED FOR 100% CD
2 REVISION 2
04-12-2024

STATE OF FLORIDA
ROBERT T. TAYLOR
ARCHITECT
REGISTERED ARCHITECT
AR0012888

ROBERT T. TAYLOR
AR0012668

12-15-2023

A101

PROJECT NO. 2023-J-153

DOOR and FRAME SCHEDULE

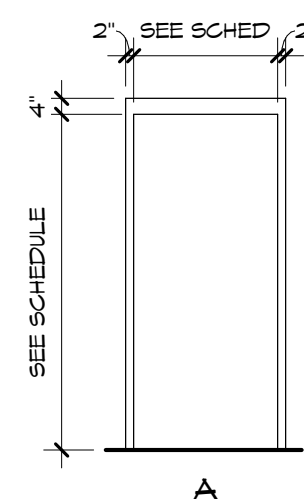
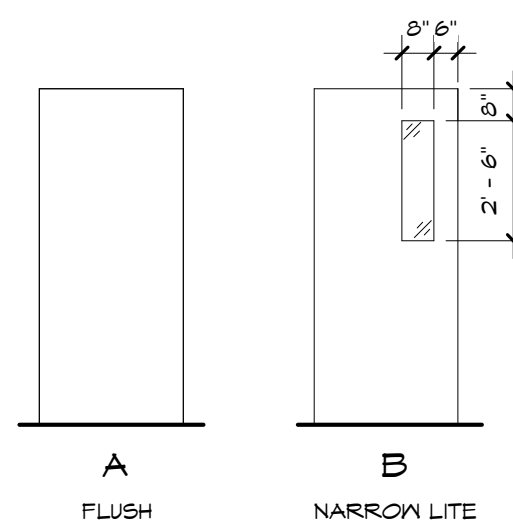
DOOR NO.	DOOR SIZE		DOOR				FRAME				NOTES
	SINGLE / PAIR	WIDTH	HEIGHT	TYPE	MATL	FINISH	TYPE	MATL	FINISH	HDRWR	
101.1	SINGLE	3'-0"	6'-8"	B	HM	F FIN	A	HM	PT	H1	BOD: STEELGRAFT H SERIES DOOR, FPA #20736.2
101.2	SINGLE	3'-0"	6'-8"	B	HM	F FIN	A	HM	PT	H1	BOD: STEELGRAFT H SERIES DOOR, FPA #20736.2
102.1	SINGLE	3'-0"	6'-8"	A	HM	F FIN	A	HM	PT	H1	BOD: STEELGRAFT H SERIES DOOR, FPA #20736.2
103.1	SINGLE	3'-0"	6'-8"	A	HM	F FIN	A	HM	PT	H1	BOD: STEELGRAFT H SERIES DOOR, FPA #20736.2
103.1	SINGLE	3'-0"	6'-8"	A	HM	F FIN	A	HM	PT	H1	BOD: STEELGRAFT H SERIES DOOR, FPA #20736.2
104.1	SINGLE	2'-8"	6'-8"	A	HM	F FIN	A	HM	PT	H2	INTERIOR DOOR
110.1	SINGLE	3'-0"	6'-8"	A	HM	F FIN	A	HM	PT	H1	BOD: STEELGRAFT H SERIES DOOR, FPA #20736.2

GENERAL DOOR NOTES:

- ALL EXTERIOR DOORS TO HAVE INSULATED PANELS AND FRAMES.
- ALL EXTERIOR DOORS TO HAVE NOA/FLORIDA PRODUCT APPROVAL NUMBER.

DOOR HARDWARE SETS:

- SET: H1**
 1 1/2 PAIR BUTT HINGES - 4 1/2" X 4 1/2" NRP
 1 CYLINDER LOCKSET - ENTRY FUNCTION
 1 CLOSER
 1 SET OF WEATHERSTRIPPING
 1 ADA COMPLIANT ALUMINUM THRESHOLD
 1 ALUMINUM KICKPLATE - 2" LESS THAN DOOR WIDTH X 12" H
- SET: H2**
 1 1/2 PAIR BUTT HINGES - 4 1/2" X 4 1/2"
 1 CYLINDER LOCKSET - STORAGE FUNCTION
 1 WALL STOP



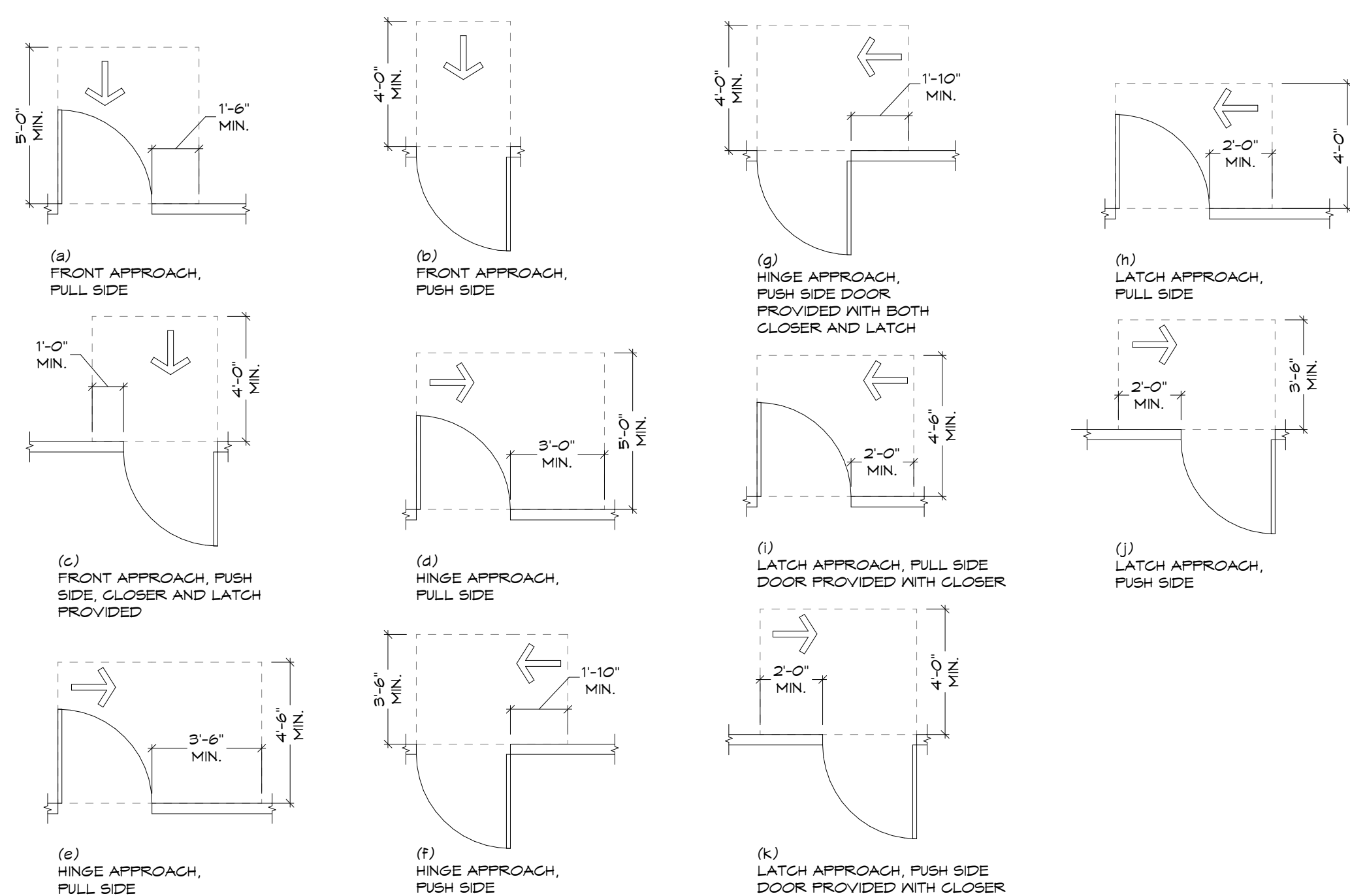
DOOR TYPES

SCALE: 1/4" = 1'-0"

DOOR FRAME TYPES

SCALE: 1/4" = 1'-0"

MANEUVERING CLEARANCE AT MANUAL SWINGING DOORS AND GATES



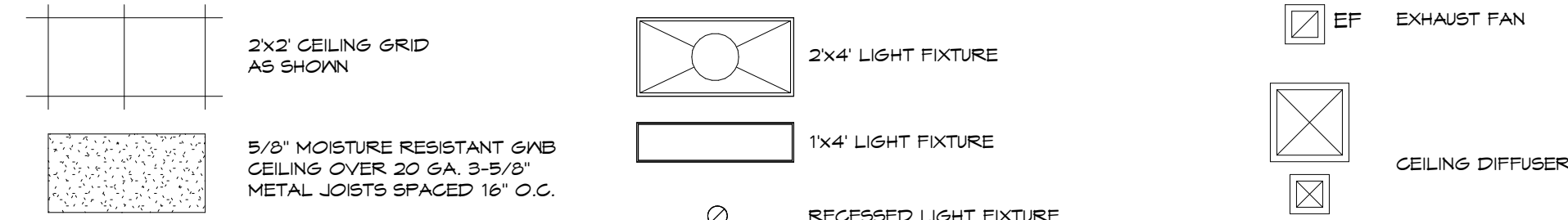
REFLECTED CEILING PLAN

SCALE: 1/4" = 1'-0"

RCP GENERAL NOTES

- REFER TO ROOM FINISH SCHEDULE FOR CEILING HEIGHTS, UNO.
- ACOUSTICAL CEILING TILE GRIDS TO BE CENTER IN SPACE, UNO.
- FIELD VERIFY ALL EXISTING DIMENSIONS.
- LIGHTING LAYOUTS SHOWN IN ARCHITECTURAL REFLECTED CEILING PLAN ARE FOR REPRESENTATIONAL PURPOSES ONLY. SEE ELECTRICAL DRAWINGS FOR LIGHTING LAYOUT AND FIXTURE SPECIFICATIONS.

REFLECTED CEILING PLAN LEGEND



ROOM FINISH SCHEDULE

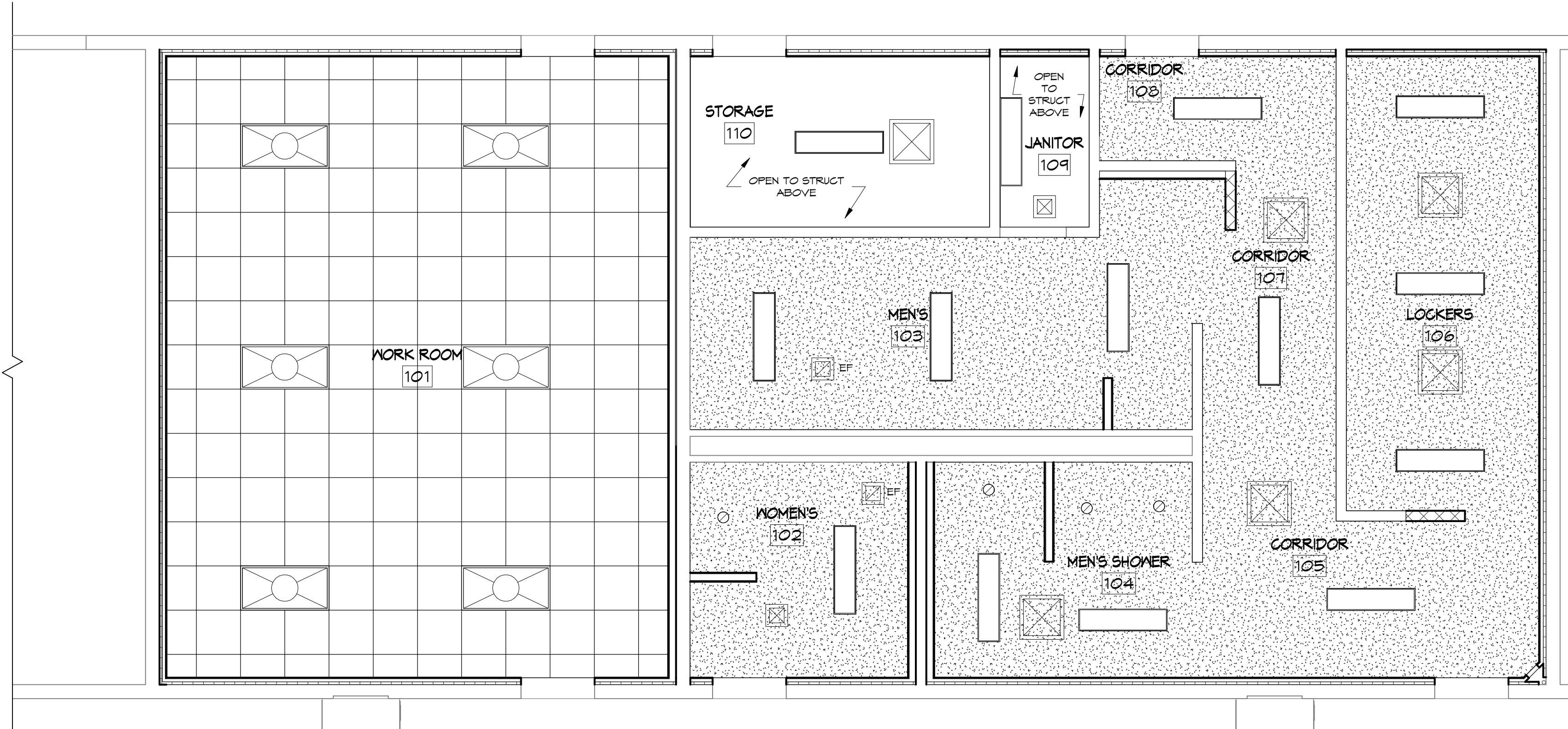
ROOM NUMBER	ROOM NAME	FLOOR MATERIAL	FLOOR FINISH	WALL BASE	NORTH WALL - MATERIAL	NORTH WALL - FINISH	SOUTH WALL - MATERIAL	SOUTH WALL - FINISH	EAST WALL - MATERIAL	EAST WALL - FINISH	WEST WALL - MATERIAL	WEST WALL - FINISH	CEILING FINISH	CEILING HEIGHT	REMARKS
101	WORK ROOM	EXIST CONC	LNF	RB	GWB	PT	GWB	PT	MRSWB	EPOXY PT	GWB	PT	ACT	8'-0"	
102	WOMEN'S	EXIST CONC	POR	POR	EXIST CMU	POR / EPOXY PT	TBB / MRSWB	POR / EPOXY PT	TBB / MRSWB	POR / EPOXY PT	CMU	POR / EPOXY PT	MRSWB	8'-0"	
103	MEN'S	EXIST CONC	POR	POR	EXIST CMU	POR / EPOXY PT	EXIST CMU	POR / EPOXY PT	EXIST CMU	POR / EPOXY PT	EXIST CMU	POR / EPOXY PT	MRSWB	8'-0"	
104	MEN'S SHOWER	EXIST CONC	POR	POR	EXIST CMU	POR	MRSWB	EPOXY PT	EXIST CMU	POR	TBB	POR	MRSWB	8'-0"	
105	CORRIDOR	EXIST CONC	POR	POR	EXIST CMU / CMU	EPOXY PT	MRSWB	EPOXY PT	MRSWB	EPOXY PT	N/A	N/A	MRSWB	8'-0"	
106	LOCKERS	EXIST CONC	POR	POR	MRSWB	EPOXY PT	EXIST CMU / CMU	EPOXY PT	MRSWB	EPOXY PT	EXIST CMU	EPOXY PT	MRSWB	8'-0"	
107	CORRIDOR	EXIST CONC	POR	POR	N/A	N/A	N/A	N/A	EXIST CMU	EPOXY PT	EXIST CMU	EPOXY PT	MRSWB	8'-0"	
108	CORRIDOR	EXIST CONC	POR	POR	MRSWB	EPOXY PT	EXIST CMU	EPOXY PT	EXIST CMU	EPOXY PT	EXIST CMU	EPOXY PT	MRSWB	8'-0"	
109	JANITOR	EXIST CONC	POR	RB	MRSWB	EPOXY PT	EXIST CMU	EPOXY PT	EXIST CMU	EPOXY PT	EXIST CMU	EPOXY PT	OPEN	N/A	
110	STORAGE	EXIST CONC	EXIST	RB (NORTH WALL ONLY)	MRSWB	EPOXY PT	EXIST CMU	EXIST	EXIST CMU	EXIST	EXIST CMU	EXIST	OPEN	N/A	

FINISH KEYS:

- FLOORING:**
 LNF - LAMINATE WOOD FLOORING
 POR - PORCELAIN TILE
- WALLS:**
 PT - PAINT
 EPOXY PT - EPOXY PAINT
 POR - PORCELAIN TILE
 CMU - CONCRETE MASONRY UNIT
 TBB - TILE BACKER BOARD
 GWB - GYPSUM WALL BOARD
 MRSWB - MOISTURE RESISTANT GYPSUM WALL BOARD
- BASE:**
 POR - PORCELAIN TILE
 RB - RUBBER/VINYL BASE
- CEILING:**
 ACT - ACOUSTICAL CEILING TILE
 MRSWB - MOISTURE RESISTANT GYPSUM WALL BOARD, PAINTED

ROOM FINISH GENERAL NOTES:

- IN LOCATIONS WHERE TILE AND PAINT IS INDICATED "POR / EPOXY PT" PROVIDE EPOXY PAINT ABOVE TILE.
- REFER TO INTERIOR ELEVATIONS FOR WALL TILE HEIGHT.



PLAN NORTH

LEE COUNTY MOSQUITO CONTROL DISTRICT
BUILDING RENOVATION
 15154 HOMESTEAD ROAD
 LEHIGH ACRES, FL 33471

ADG ARCHITECTURE, LLC
 ARCHITECTURE • PLANNING • INTERIOR DESIGN

4161 Tamiami Trail #501
 Fort Charlotte, Florida 33852
 Ph: (813) 858-2450 Fax: (813) 858-2458

3820 Colonial Blvd. #100
 Fort Myers, Florida 33906
 Ph: (239) 277-5554 Fax: (239) 277-0741

AA-26002422

www.adgarchitecture.com

04-21-2023
 12-15-2023
 04-12-2024

ISSUED FOR SD
 2 REVISION 2

STATE OF FLORIDA
 ROBERT T. TAYLOR
 ARCHITECT
 REGISTERED ARCHITECT
 AR0012668

12-15-2023

A102

PROJECT NO. 2023-J-195

