The background of the slide is a photograph of a modified rotary time trap. The trap consists of a central vertical pole with several horizontal arms extending from it. Each arm has a series of small, dark, rectangular traps attached to it. The trap is silhouetted against a vibrant sunset sky with orange, red, and purple hues. The horizon line is visible in the lower third of the image, with some dark silhouettes of trees or vegetation. The text is overlaid on the upper half of the image.

A Modified Rotary Time Trap Shows That *Ae. aegypti* Are More Than Day Time Biters

James Burgess, Tom Miller,
Jon Hornby, and T. Wayne Gale
Lee County Mosquito Control District
Ft. Myers, Florida





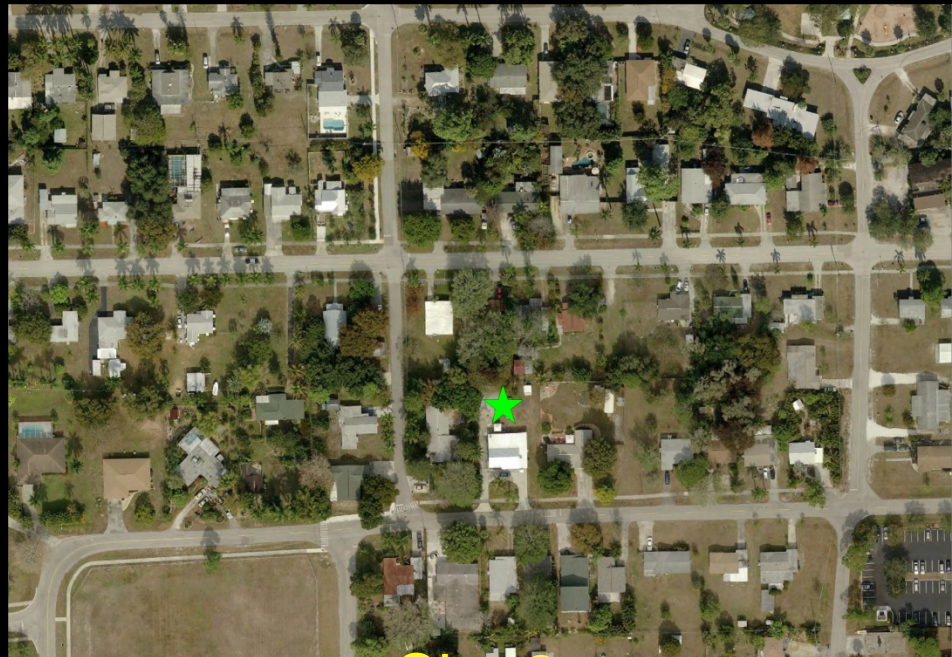








Site 1



Site 2





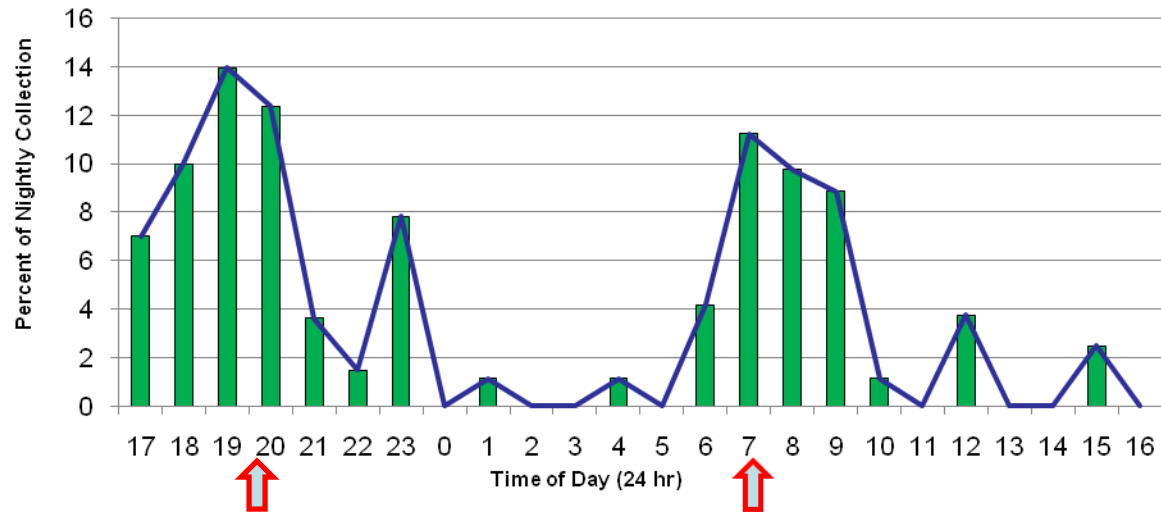
Site 2



Ae. aegypti

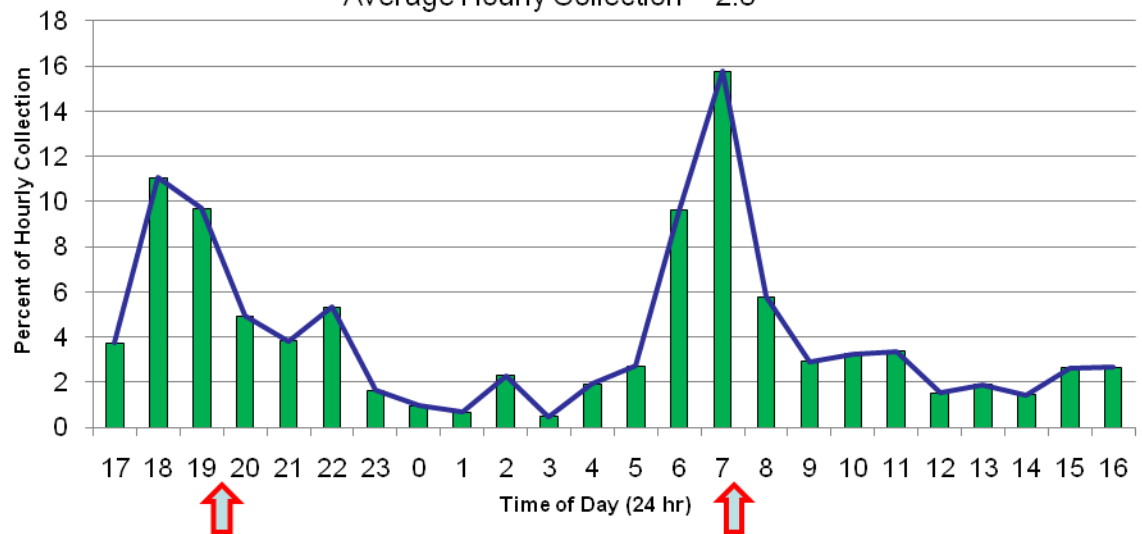
Site #1

Average Hourly Collection = 0.32



Site #2

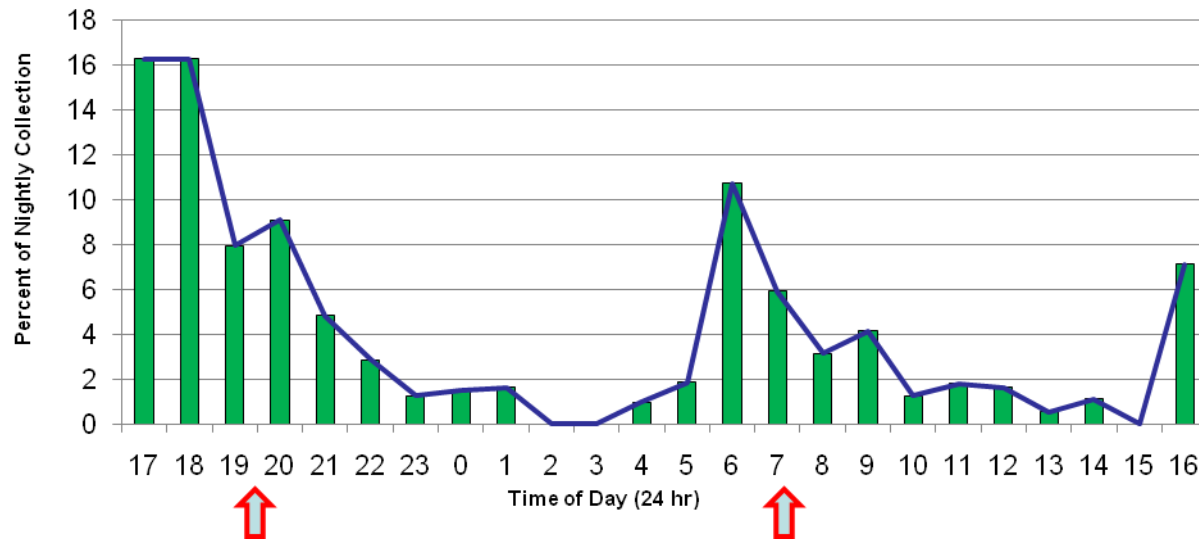
Average Hourly Collection = 2.8



Ae. albopictus

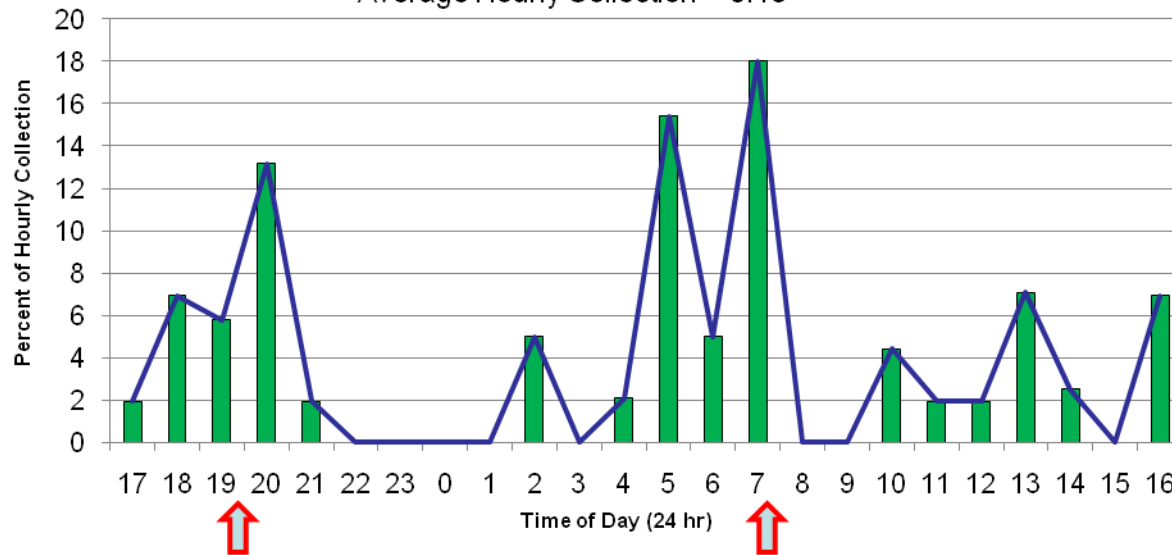
Site #1

Average Hourly Collection = 0.74



Site #2

Average Hourly Collection = 0.18



Any Questions?

